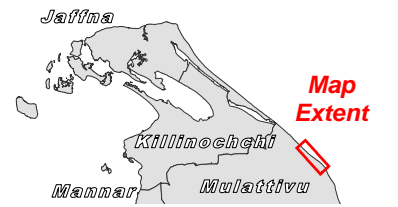


NEWLY ERECTED IDP SHELTERS WITHIN CIVILIAN SAFETY ZONE (CSZ) - MULATTIVU DISTRICT, SRI LANKA



26 FEBRUARY 2009
MAP VERSION 1.0
SE-2009-000011-LKA

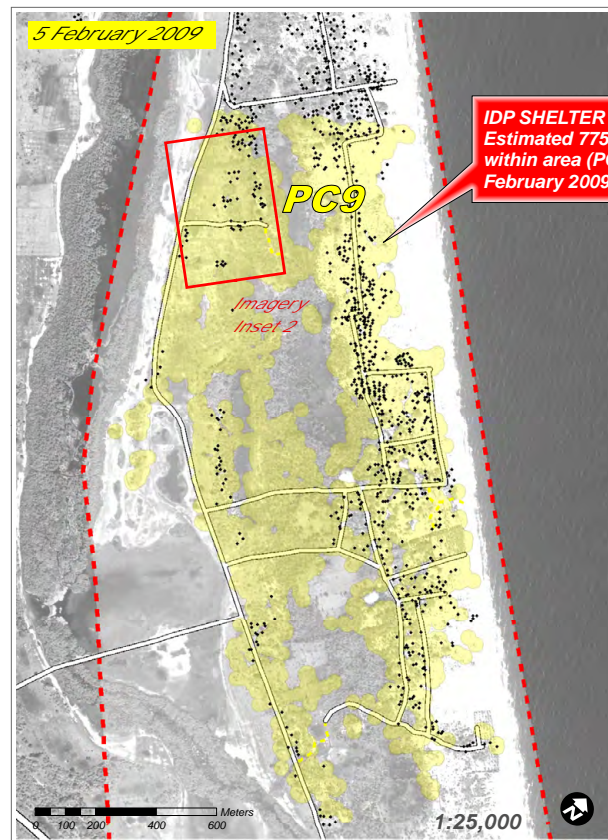
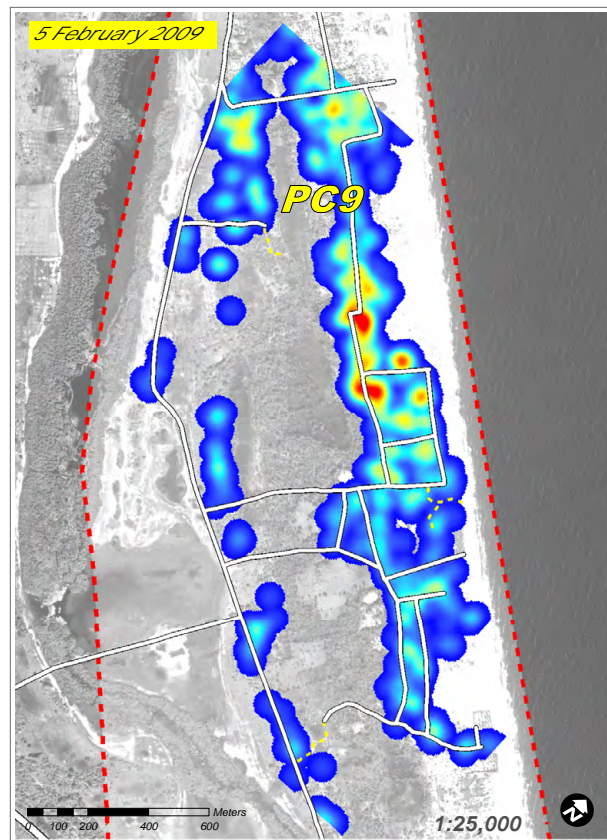
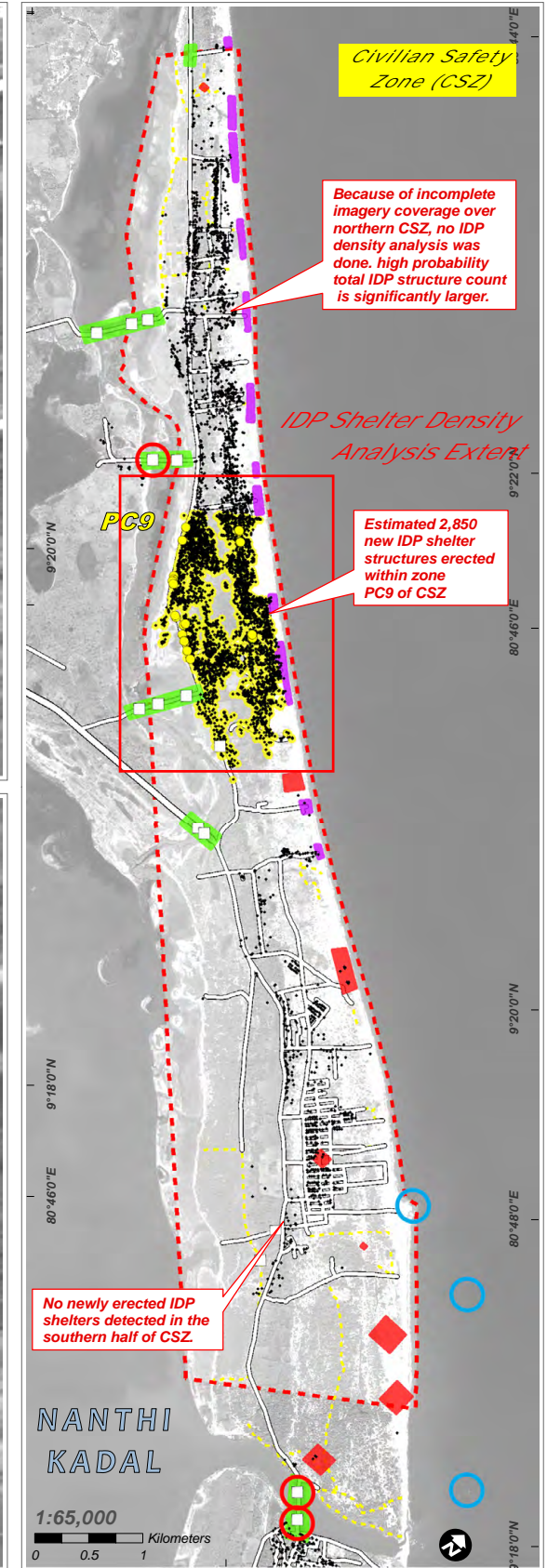
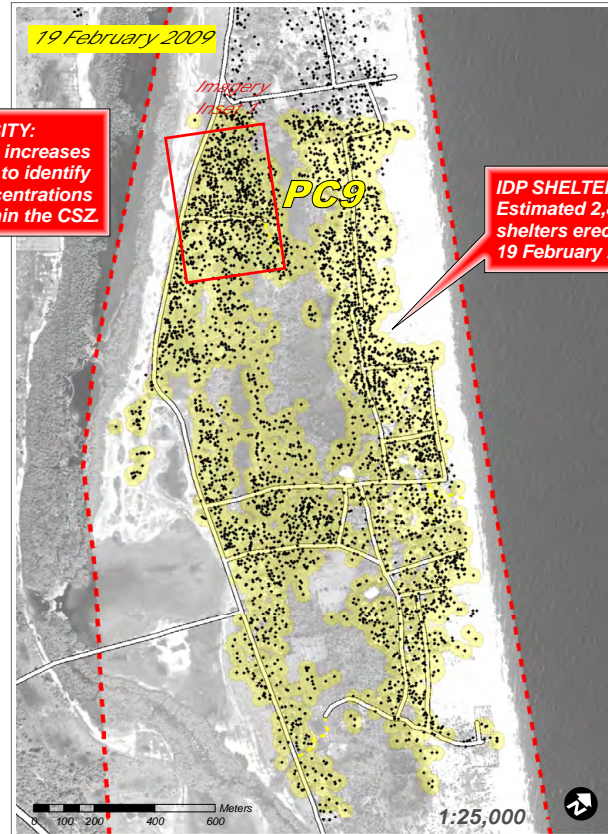
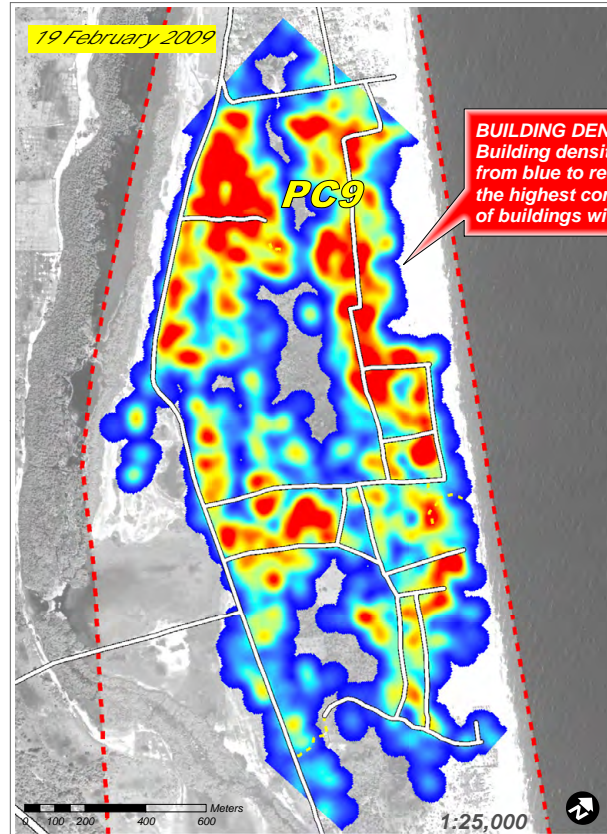


Analysis summary of satellite imagery acquired on 5, 18-19 February 2009 over the government-declared "Civilian Safe Zone" (CSZ) in the Mulattivu district of northern Sri Lanka. There are clear indications that thousands of IDPS have moved into the northern half of the CSZ between 5 & 19 February 2009. A satellite-derived

preliminary estimate based on automatic detection methods, indicates there are approximately 2,850 newly erected IDP shelter structures within the area designated PC9. This represents a minimum increase of over 100% from the total building count within CSZ of 2,600 as of 5/2/09. Because of incomplete imagery coverage over

northern CSZ, there is a high probability that the IDP structure count is significantly higher. It is important to note that no newly erected IDP shelter structures were detected in the southern half of CSZ. There are several possible impact crater sites within the southern half of the CSZ, along with limited building damages. Analysis

was done with WorldView-1 satellite imagery recorded on 5 & 18-19 February 2009 at a spatial resolution of approximately 0.5 meters. This is an initial assessment and has not been verified in the field.



- Map Legend**
- Building / Structure
 - Bridge (Culvert)
 - Road / Bridge Obstacle
 - Vessel Wreckage
 - Primary Road
 - Secondary Road
 - Trail / Track
 - "Civilian Safe Zone" (CSZ)
 - Small Vessel Beach Landing Site (VL)
 - IDP Transit Route into CSZ
 - Damage Sites (DS)
 - IDP Shelter Concentrations (PC)
 - Vehicle Concentrations (VC)

Satellite Data WorldView1
Date 5, 18-19 February 2009
Resolution 0.5 meters
Copyright GeoView / DigitalGlobe 2009
Source US Dept. of State (HIU)
Analysis UNOSAT
GIS Data Vectorized from imagery by UNOSAT
Projection UTM Zone 44 North
Datum WGS-84



The depiction and use of boundaries, geographic names and related data shown here are not warranted to be error-free nor do they imply official endorsement or acceptance by the United Nations. UNOSAT is a program of the United Nations Institute for Training and Research (UNITAR), providing satellite imagery & related geographic information, research and analysis to UN humanitarian & development agencies & their implementing partners.

Contact Information: info@unosat.org 24/7 Hotline: +41 76 487 4998 www.unosat.org