

OVERVIEW OF FLOOD WATERS IN KILINOCHCHI DISTRICT, SRI LANKA

Flood Analysis with Radarsat Data Recorded 1 December 2008 & 21 June 1998 & ENVISAT-ASAR Data Recorded 11 November 2008

This map illustrates satellite-detected water over the flood-affected district of Kilinochchi, Sri Lanka. Probable flood waters were detected with Radarsat data acquired on 1 December 2008 at a spatial resolution of 25m. Pre-flood Radarsat data from 21 June 1998 & ASAR-WSM radar data from 11 November 2008 was also used in this analysis. This flood assessment is a preliminary analysis & has not yet been validated in the field.

Disaster coverage by the International Charter 'Space and Major Disasters'. For more information on the Charter, which is about assisting the disaster relief organizations with multi-satellite data and information, visit www.disasterscharter.org

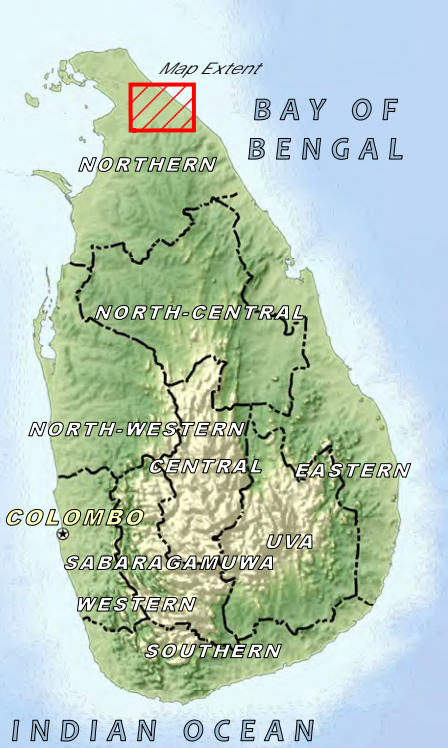
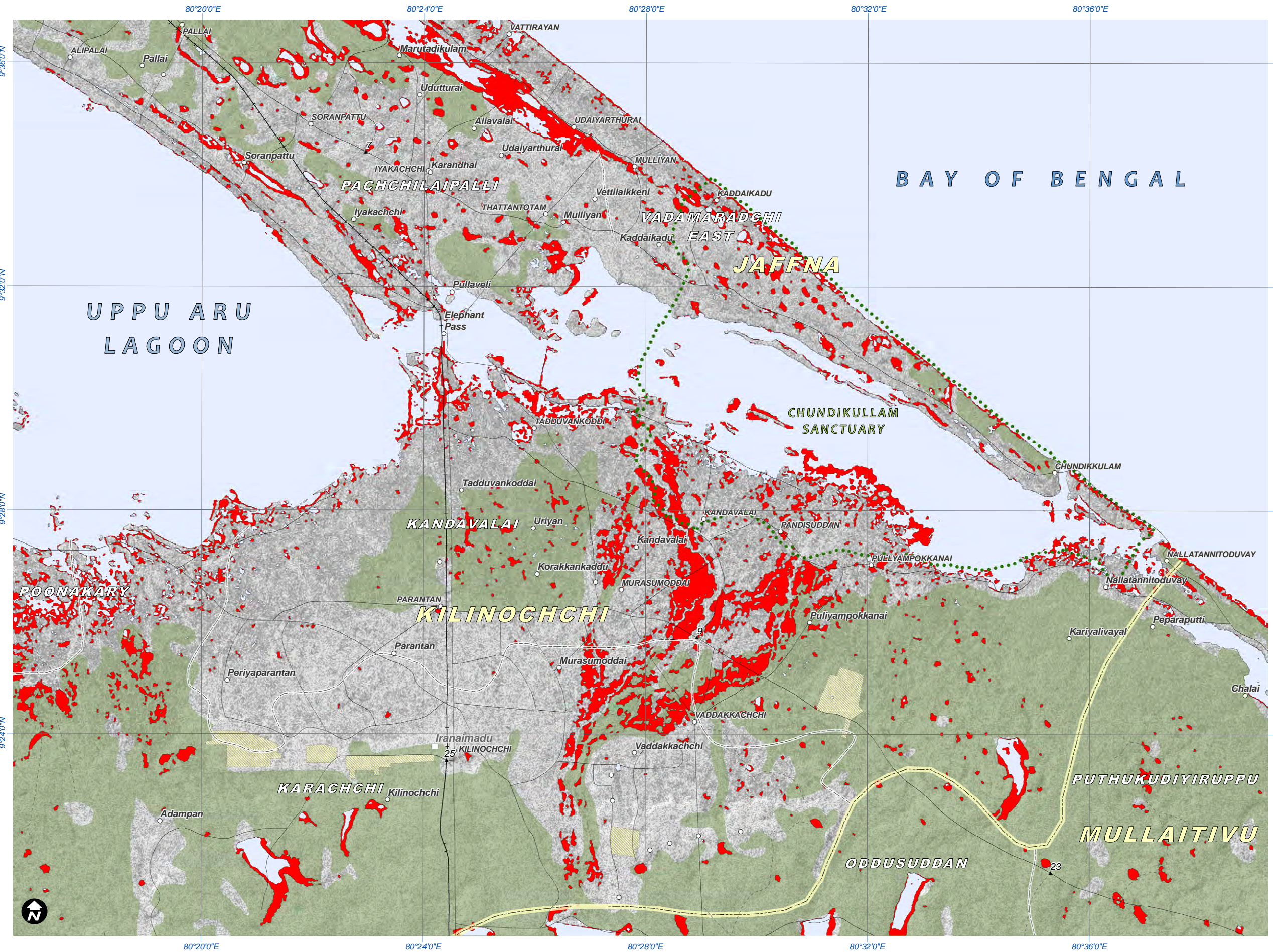


Heavy Rainfall & Flooding 3 December 2008



Version 1.0

Glide No: TC-2008-000237-LKA



Legend

City	District Boundary
Village / Town	Division Boundary
Spot Height (m)	Main Road
Built-up Area	Railroad
Protected Natural Area	Forest Cover

RADARSAT WATER CLASSIFICATION:

	Flood Water / Flood-Affected Areas (1 December 2008)
	Pre-Crisis Standing Waters (21 June 1998)

Map Scale for A3: 1:120,000

0 0.5 1 2 3 4 5 6 km

Satellite Data Radarsat (25m)
Date 1/12/2008 & 21/6/98
Source Canadian Space Agency (2008)
Satellite Data (2) ... ENVISAT-ASAR WSM
Date 11 November 2008
Source ESA (2008)
Other Data GIST, OCHA, ESRI, USGS, NGA
Flood Analysis UNOSAT (2008)
Map Production UNOSAT (2008)
Projection UTM Zone 44 North
Datum WGS 1984

The depiction and use of boundaries, geographic names and related data shown here are not warranted to be error-free nor do they imply official endorsement or acceptance by the United Nations. This map was produced by the United Nations Institute for Training and Research (UNITAR) Operational Satellite Applications Program (UNOSAT). UNOSAT provides satellite imagery & related geographic information to UN humanitarian & development agencies & their implementing partners.

UNOSAT

satellite solutions for all

Contact Information: info@unosat.org
24/7 Hotline: +41 76 487 4998
www.unosat.org